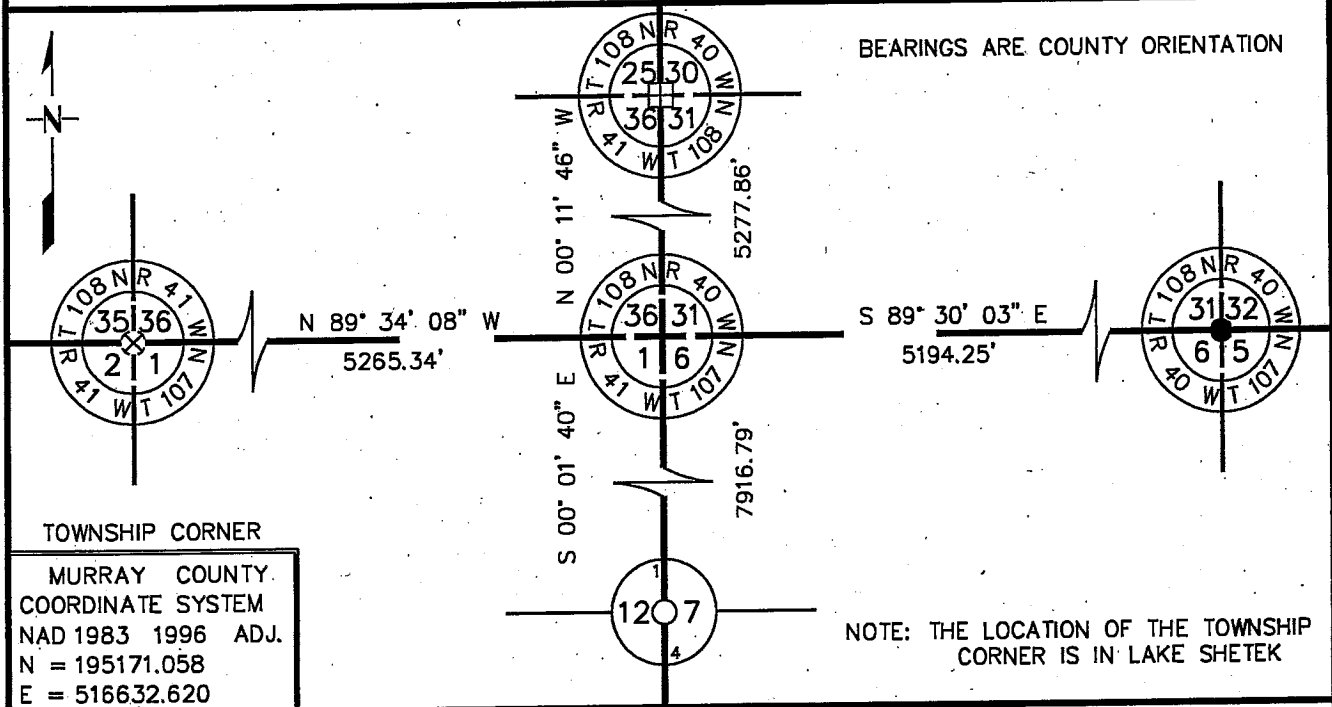


CERTIFICATE OF LOCATION OF GOVERNMENT CORNER

NORTHEAST Corner of Section 1, Township 107 N, Range 41 W
5th Principal Meridian, State of Minnesota, County of MURRAY

At the corner location shown on the sketch:

- On _____ found a _____
 DATE
- left monument as found, lowered monument, removed monument (explain)
- On AUG 2008 Placed a _____
 DATE



Statement of evidence for this corner location is on back of this page. 10/31/08
SPK00220.00.00.01

I certify that this document was researched and prepared by me or under my direct supervision.

SIGNATURE: Bruce W. Shippel DATE 10/14/09 License Number 17003

Title: Land Surveyor Professional Engineer County Surveyor County Engineer

The DNR Division of Lands and Minerals contacted the following for survey information:

Minnesota Secretary of State's Office
Murray County Recorder's Office
Murray County Highway Engineer's Office
Bueltel-Moseng Land Surveying of Marshall
Zieske Land Surveying Inc. of Windom
Madsen Land Surveying Inc. of Fairmont
Pellinen Land Surveying of Hutchinson

- 1861 U.S. General Land Office notes and plats, obtained from the Secretary of State's Office, show the corner in Lake Shetek with distances to it in all four cardinal directions. The corner is shown:
- a) 18.00 chains (1188.00 feet) from Meander Corner Number 5 on the north line of Section 1
 - b) 3.00 chains (198.00 feet) from Meander Corner Number 46 on the west line of Section 31
 - c) 16.82 chains (1110.12 feet) from Meander Corner Number 4 on the north line of Section 6
 - d) 80.00 chains (5280.00 feet) from the northeast corner of Section 36
 - e) 120.00 chains (7920.00 feet) from the east quarter corner of Section 12
 - f) 40.00 chains (2640.00 feet) from the north quarter corner of Section 1
 - g) 78.92 chains (5208.72 feet) from the northeast corner of Section 6

- No Surveyor's Record Book, obtained from the County Highway Engineer's Office,
Date contains a survey in Section 1, which shows the section corner in Lake Shetek. The corner is shown:
- a) 18.00 chains (1188.00 feet) from Meander Corner Number 5 on the north line of Section 1

- No Surveyor's Record Book, obtained from the County Highway Engineer's Office,
Date contains a survey in the Government Lots 3 and 4 of Section 6, which shows the section corner in Lake Shetek. The corner is shown:
- a) 16.82 chains (1110.12 feet) from Meander Corner Number 4 on the north line of Section 6

The following is noted:

"timber land on Lots 3 and 4 divided into lots as per plat to be filed in the Register of Deeds Office stake at corners and lines blazed"

- No Surveyor's Record Book, obtained from the County Highway Engineer's Office,
Date contains a survey in Government Lot 3 of Section 31, T108N, R40W, which shows the section corner in Lake Shetek. The corner is shown:
- a) 3.00 chains (198.00 feet) from Meander Corner Number 46 on the west line of Section 31

The following is noted:

“Lot 3 divided into timber lots as per plat filed in the Register of Deeds Office, stakes at corners and lines blazed”

1935 A Property and Location Map for Lake Shetek Park Project by the State of Minnesota Emergency Relief Administration that shows Section 1, T107N, R41W and Section 6, T107N, R40W, in the possession of the DNR Division of Lands and Minerals, shows a symbol for the corner but does not indicate what was found or set. The corner is shown:

- a) 2339.0 feet west of a point on the north line of Section 6 (believe that 2339.0 feet is incorrect because the scaled distance on the map is 1339.0 feet)
- b) 2632.7 feet from a point on the north line of Section 6 (believe that 2632.7 feet is incorrect because the scaled distance on the map is 1632.7 feet)

1936 December, pages in a field notebook by the National Park Service, in the possession of the DNR Division of Lands and Minerals, shows that a base line was measured easterly of the northeast corner of Section 2 and at a distance of 5280 feet east of the corner a 2 inch galvanized pipe 7 feet long was set near the south point of Loon Island. The notes do not indicate if the pipe is the section corner. The pipe is shown:

- a) 1943.44 feet west of a 1 ½ inch galvanized pipe
- b) 2274.23 feet west of a 1 ½ inch galvanized pipe

1936 A Survey Map by the National Park Service that shows Sections 5 and 6, T107N, R40W, Sections 1 and 2, T107N, R41W, and Sections 35 and 36, T108N, R41W, in the possession of the DNR Division of Lands and Minerals, shows that a base line was measured as follows:

from a brass plug at the intersection of a north-south concrete pavement road and an east-west gravel road in the vicinity of the northwest corner of Section 2, Township 107 North, Range 41 West to the area of the northeast corner of Section 5, Township 107 North, Range 40 West

A boulder was set for the corner and is shown to be:

- a) on the base line
- b) on the southerly edge of Loon Island
- c) 2634.0 feet from the north quarter corner of Section 1
- e) 2632.7 feet from the north quarter corner of Section 6
- f) 5265.5 feet from the northeast corner of Section 6
- g) 5244.8 feet from the northeast corner of Section 36
- h) 5230.0 feet from the southeast corner of Section 1

Northeast Corner of Section 1, Township 107 North, Range 41 West, Page 3 of 4

Computations using stationing reveal that the boulder is:

- a) 2640.55 feet from the north quarter corner of Section 1
- b) 2652.00 feet from the north quarter corner of Section 6
- c) 5292.60 feet from northeast corner of Section 6

The map has conflicting distances to section and quarter corners and appears that it's a preliminary survey because no boundary work is shown on it.

1966 DNR Bureau of Engineering contracted N.C. Hoium and Associates Inc. of Coon
1967 Rapids, Minnesota, to survey property in Lake Shetek State Park. The DNR records of survey show that a traverse was run from the northwest corner of Section 1, Township 107 North, Range 41 West to the northeast corner of Section 5, Township 107 North, Range 40 West. The corner location is shown in Lake Shetek. A position for the section corner was computed as follows:

- a) on the westerly extension of a line from the north quarter corner of Section 2 thru the northeast corner of Section 2
- b) 5268.0 feet (5280.00 feet – GLO) from the northeast corner of Section 2
- c) 10443.56 (10488.72 feet – GLO) feet from the northeast corner of Section 5

Computations from the survey information reveal that monuments were set on the north line of Sections 5 and 6 as follows:

- 3088 feet west of the northeast corner of Section 5
- 4826 feet west of the northeast corner of Section 5
- 5541 feet west of the northeast corner of Section 5
- 5860 feet west of the northeast corner of Section 5

A Conservation Monument was set on the north line of Section 6 at a distance of:
2170.70 feet east of the section corner

An iron pipe was set on the north line of Section 1 at a distance of:
2459.35 feet west from the section corner

1981 December, a hand written statement with Willard Pellinen's business card copied thereon, from McCombs- Knutson Associates, Inc. in the possession of the DNR Division of Lands and Minerals, states the following about the corner:
we computed the location for the southwest corner of Section 31 (northeast corner of Section 1), which falls in the lake.

An attached sketch shows the corner:

- 2561.60 feet from the north quarter corner of Section 6
- 5194.28 feet from the northeast corner of Section 6
- 2632.68 feet from the north quarter corner of Section 1
- 5265.36 feet from the northwest corner of Section 1
- 5301.88 feet from the northeast corner of Section 36
- 7952.82 feet from the east quarter corner of Section 12

Analysis of the above information led the DNR Division of Lands and Minerals to conclude that:

- a) in 1936, the National Park Service established the corner location incorrectly- they should have used double proportional measurements
- b) in 1966/1967, N.C. Hoium and Associates Inc. established the corner location incorrectly- they should have used double proportional measurements
- c) in 1981, Willard Pellinen used the correct method to compute the location of the section corner (double proportional measurement) but in doing so he used the incorrect location for the east quarter corner of Section 12

Monuments that were set along the north line of Sections 1 and 6 in 1936 and 1966/1967 were not searched for because their locations were determined from incorrect locations for the northeast corner of Section 1.

The location for the northeast corner of Section 1 needs to be computed using GLO proportional measurement from the nearest known corners. So the location of the corner was computed as such and was found to be:

- 5194.25 feet from the northeast corner of Section 6
- 5265.34 feet from the northwest corner of Section 1
- 5277.86 feet from the northeast corner of Section 36
- 7916.79 feet from the east quarter corner of Section 12

Being the corner is in Lake Shetek, a monument was not set to mark its location and a reference monument(s) to it was not set.